

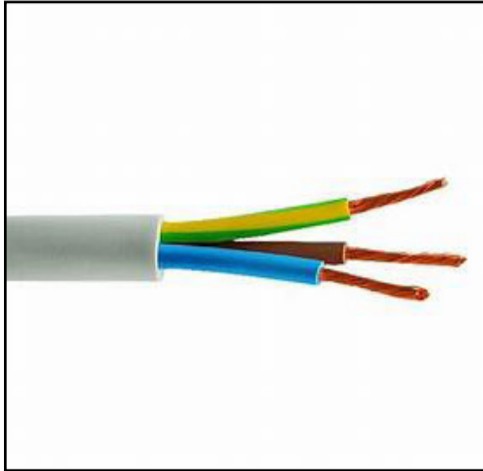
**recipe
for a floor
lamp.**



the ingredients.



perforated brick **1x**
(25x12x12cm)



power cable **1x**
(4mt)



screws **20x**
(flathead, 6cm)



wood planks **2x**
(25x25x1cm)
(21x21x1cm)



metal tube **1x**
(160cm Ø15mm)



power plug **1x**



porcelain E27
lampholder **1x**



E27 lightbulb **1x**



foot switch **1x**



lampholder connector **1x**
(4cm)

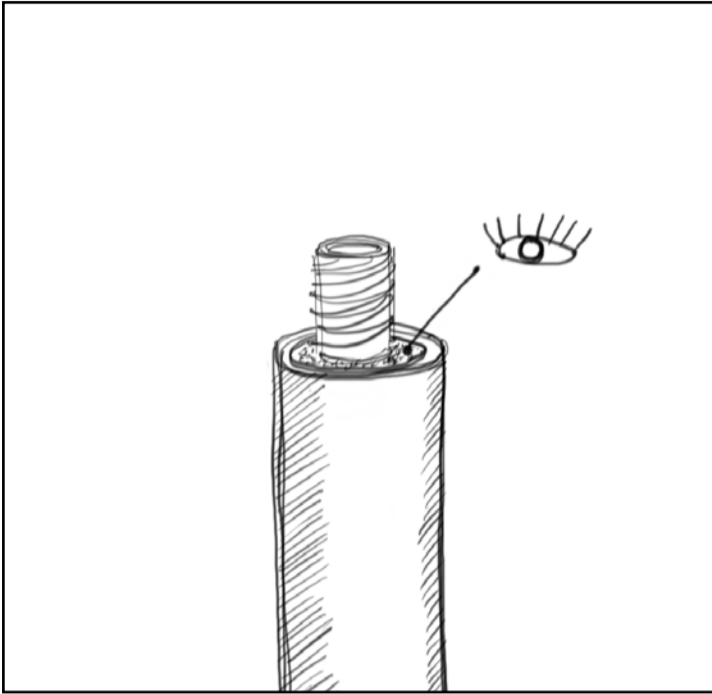


spray paint **2x**
(black, petroleum blue)



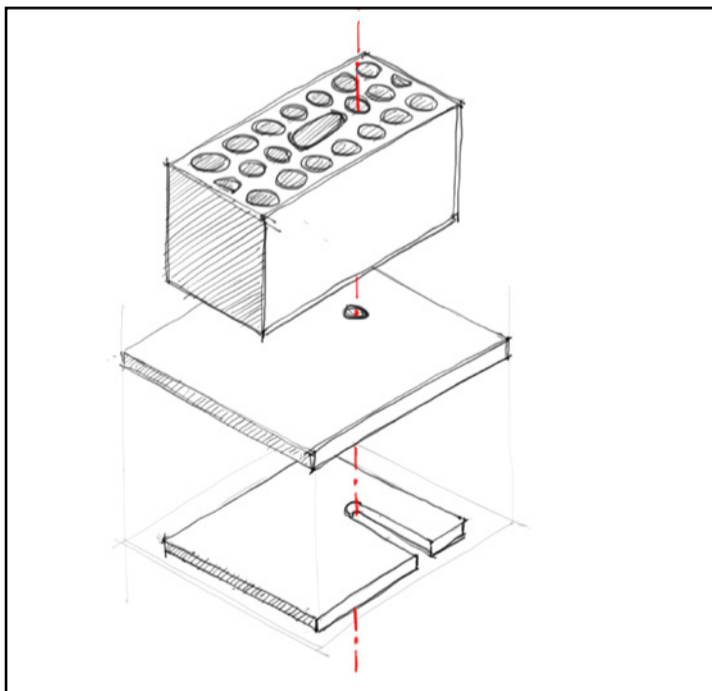
pre-mixed concrete **1x**

the recipe.

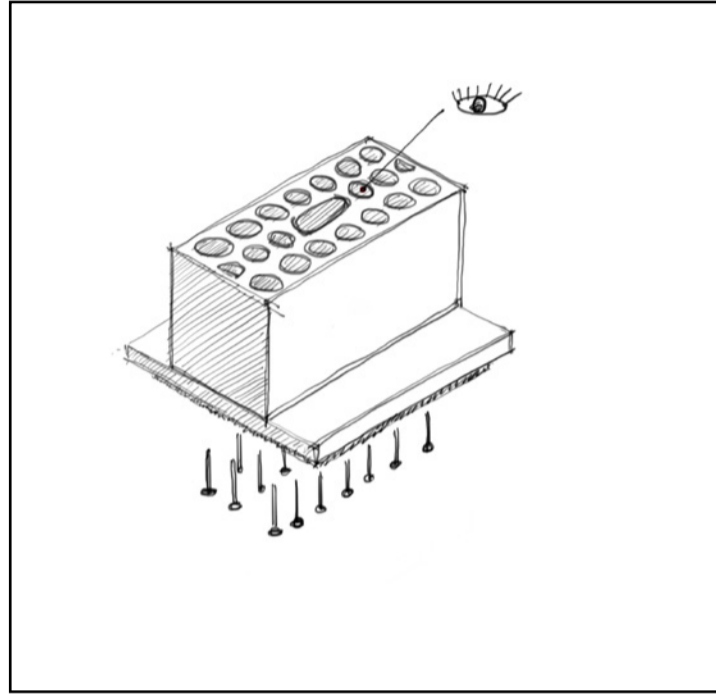


1_ Mount the lampholder connector centered into the metal tube. Let out enough to allow the lampholder to screw on it. Fill the extra space with the pre-mixed concrete and let it dry. Paint it black.

2_ Cut the power cable in two parts (2mt each). Install one cable on the lampholder, pass it through the connector and out of the tube. Then screw the lampholder on the connector.

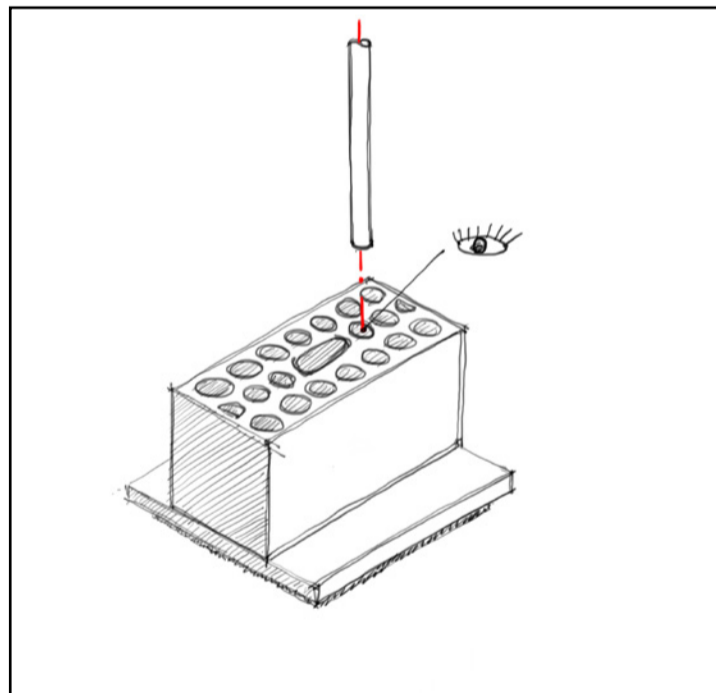


3_ Make a hole in the 25x25 wood plank Ø15mm aligned with the brick hole used to fit the metal tube. Center the second plank on the first one and cut away a slit to allow the cable to pass.



4_ Screw together the two planks. Keep the screws aligned to the brick holes! They should protrude from the planks 4cm. Don't block the hole for the cable & tube. Paint the base blue.

5_ Put the brick over the base and half-fill the holes (excluded the one for the tube) with pre mixed concrete to grip on the screws. Let it dry.



6_ Fit the tube with the lampholder into the last hole, make the cable come out of the slit on the bottom of the base, than fill it with the pre-mixed concrete. Be sure the tube stays straight while the concrete dries.

7_ Install the foot switch, the second part of the cable and the power plug. Screw on the lightbulb and... voilà: you've successfully built a designer floorlamp!